

# Specifications

备注 (Remark)

1. 材料 (MATERIAL)

胶芯: LCP+30%G. F UL94V-0, 颜色: 黑色.

Housing: LCP+30%G. F UL94V-0, Color: Black

端子: 磷/青铜, 镀底30u"MIN, 表面镀金1u"MIN

Contact: Phosphor bronze, 1u"MIN GOLD PLATING OVER ALL

30u" MIN NICKEL UNDERPLATING OVER ALL

2. 特性 (characteristics):

额定电流: 1 AMP

Rated Current: 1 AMP.

接触阻抗: 20 mΩ MAX.

Contact Resistance: 20 mΩ MAX.

绝缘阻抗: 1000 MΩ MIN.

Insulating Resistance: 1000 MΩ MIN.

耐电压: AC 500V.

Withstanding Voltage: AC 500V.

温度范围: -40° C to +105° C

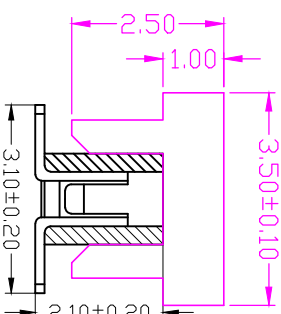
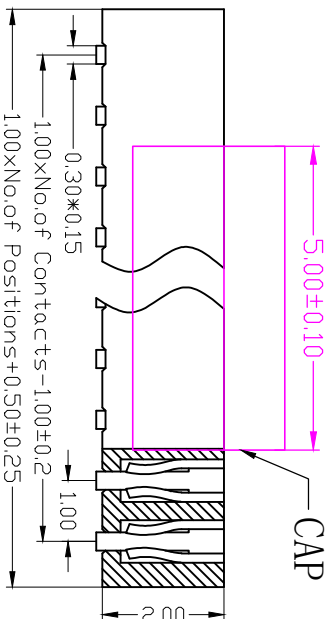
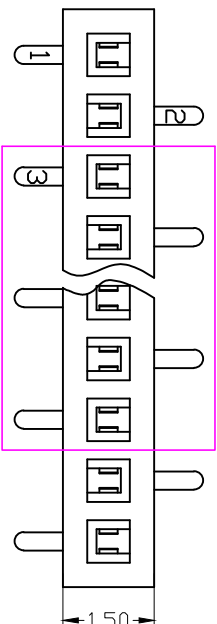
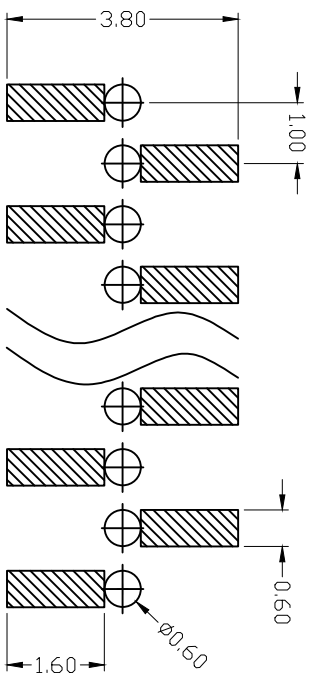
Temperature Range: -40° C to +105° C

## Ordering Information

B0220-11 XX XX X CC X 1

NO. OF PINS	Contact Plating	INSULATOR	PACKING
PRR ROW	Full Of Gold	Semi-gold	MATERIAL:
2~50P	G0=0.8u"	L0=0.8U"	1: PBT
	G1=1u"	L1=1U"	2: PA46
	G2=1.5u"	L2=1.5U"	3: PA66
	G3=2u"	L3=2U"	4: PA6T
	G4=3u"	L4=3U"	5: PA9T
	G5=5u"	L5=5U"	6: LCP
	G6=10u"	L6=10U"	7:
	G7=15u"	L7=15U"	
	G8=20u"	L8=20U"	
	G9=30u"	L9=30U"	

T1=Ordinary Tin Plated  
T2=Matte Tin Plated  
T3=Tin-plated High-temperature  
T4=high temperature Matt tin



**JIANGJI**

苏州江基电子科技有限公司  
Suzhou Jiangji Electronic Technology CO.,LTD

PART NO. B0220-11XXXXCCX1

TITLE: 1.00mm单排母 塑高2.0 SMT 上插式 正脚位

Customer No.

OPERATION

SCALE

UNIT

MM

DESIGN

CHECK

APPROVE

SIZE

SHEET

I/1

ANGEL

PROJ.

APPROVE

DIM

TOL

CHANGE

APPROVE

DATE

DOIFICATION DESCRIPTION

REV

1

2

3

4

5

6

7

8

9

10